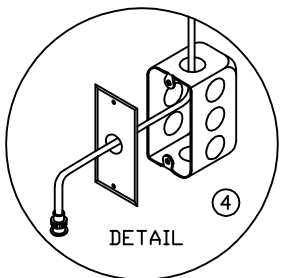
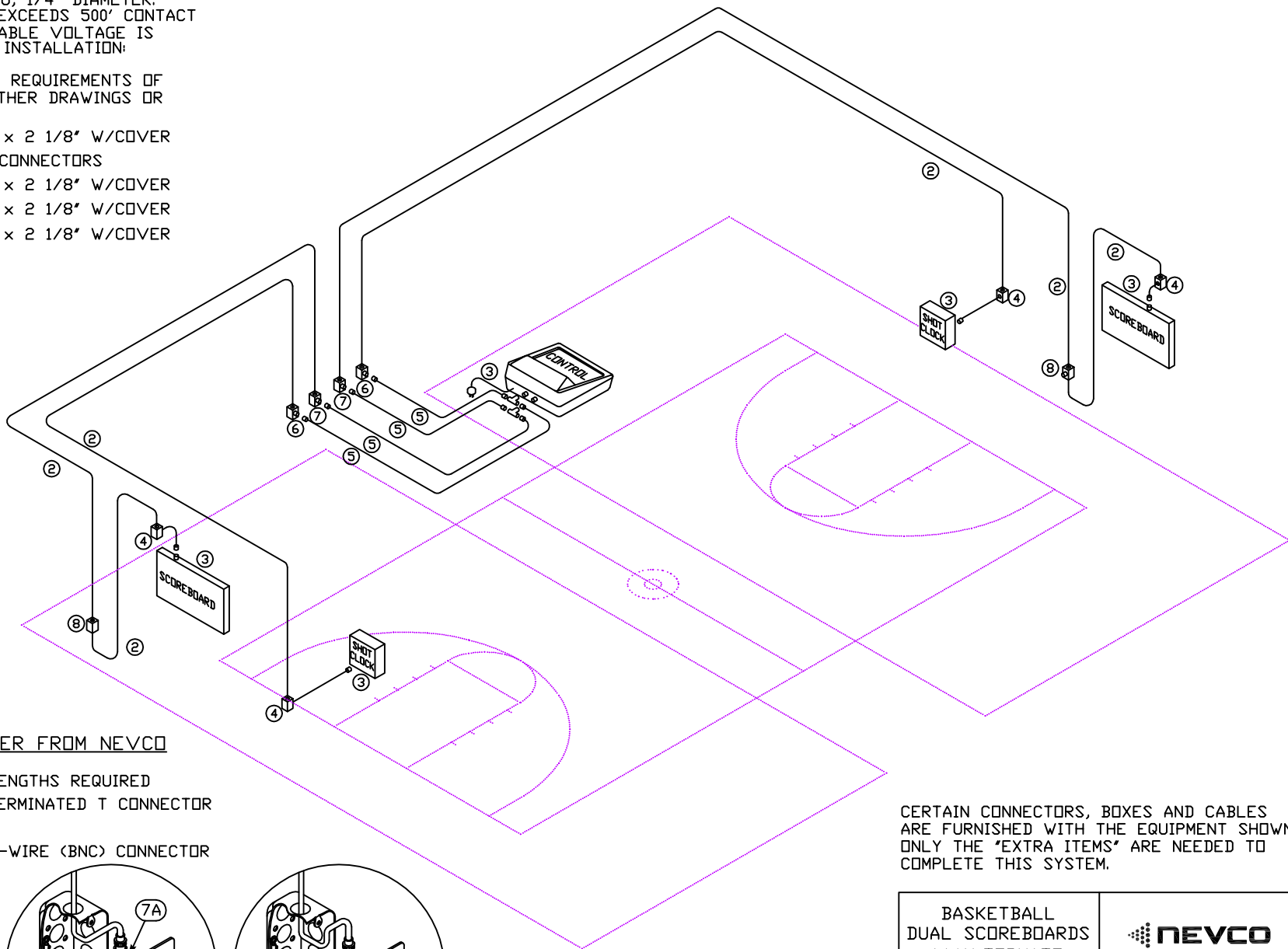


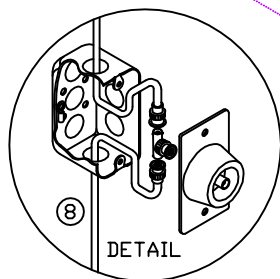
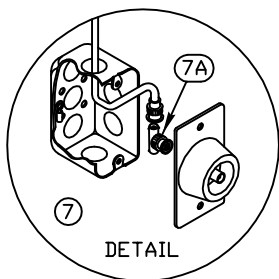
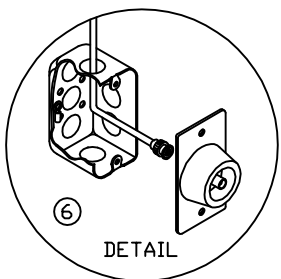
NOTES

- ② CONTROL CABLE RG-58/U, 1/4" DIAMETER. IF ANY CABLE LENGTH EXCEEDS 500' CONTACT THE NEVCO FACTORY. CABLE VOLTAGE IS 5 VOLTS. FOR CONDUIT INSTALLATION: 1/2" CONDUIT REQUIRED
- ③ FOR ELECTRICAL POWER REQUIREMENTS OF EACH ITEM REFER TO OTHER DRAWINGS OR SPECIFICATIONS.
- ④ WALL BOX 4" x 2 1/8" x 2 1/8" W/COVER
- ⑤ CONTROL CABLE 25' W/CONNECTORS
- ⑥ WALL BOX 4" x 2 1/8" x 2 1/8" W/COVER
- ⑦ WALL BOX 4" x 2 1/8" x 2 1/8" W/COVER
- ⑧ WALL BOX 4" x 2 1/8" x 2 1/8" W/COVER




EXTRA ITEMS TO ORDER FROM NEVCO

- ② 009-0084 < 6 EA. > LENGTHS REQUIRED
- ⑦A 210-0007 < 2 EA. > TERMINATED T CONNECTOR
- ⑧ 239-0081 < 2 EA. >
- 210-0008 < 4 EA. > 2-WIRE (BNC) CONNECTOR



CERTAIN CONNECTORS, BOXES AND CABLES ARE FURNISHED WITH THE EQUIPMENT SHOWN. ONLY THE "EXTRA ITEMS" ARE NEEDED TO COMPLETE THIS SYSTEM.

BASKETBALL DUAL SCOREBOARDS W/ALTERNATE CONTROL POINTS & SHOT CLOCK SET SYSTEM		 NEVCO, INC. GREENVILLE, ILLINOIS 62246
DRAWN HW	DATE 08/11/10	SHEET 1 OF 1