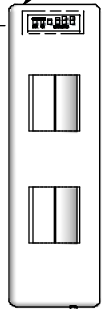


Signal Strength Meter

Point client bridge at access point in control room to obtain required signal strength.



3 bars required for adequate signal



Client Bridge (see sheet 6 for mounting)

Cross Over Ethernet Signal to Power/Signal-In Access Panel.

Raintight Box (See Sheet 2)

* Disconnect Switch

Power from Branch Circuit

Client Bridge
Mount in Clear-Line-Of-Sight to wireless transmitter.

Ethernet Cable
(straight through from receiver to POE)

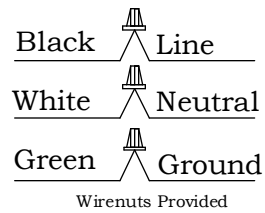
Power to Raintight Box

Sign Power to 2x4 Box (consult installation instructions for amperage requirement)

Note: It is not necessary to remove message center display panels to make any connections.

Note: For indoor installations, a raintight box is not required. Make connections same as above.

Sign Power Connections



Grounded pigtail located inside 2x4 box. Must connect when connecting power.

Make connections by removing other access panel near Power/Signal-In panel. Replace all covers when connections have been made.

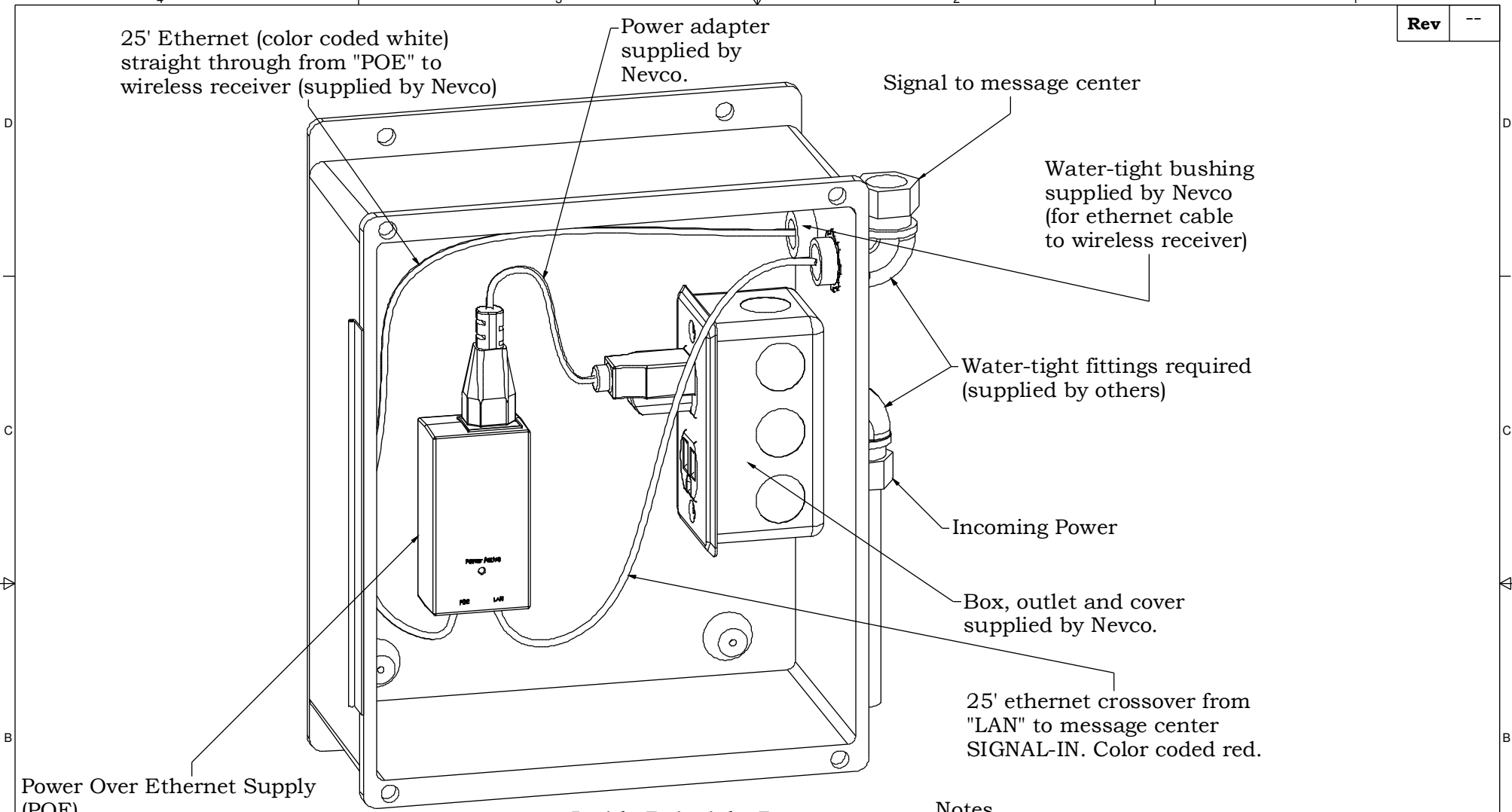
Feed panel through hole as shown to change location of access panels.

Power/Signal-In panel can be relocated to side, bottom or back of message centers for wall mount or adjacent signs.

National Electric code requires a disconnect switch within Sight of the sign or lockable within the building. If neither is available, install a disconnect at the sign.

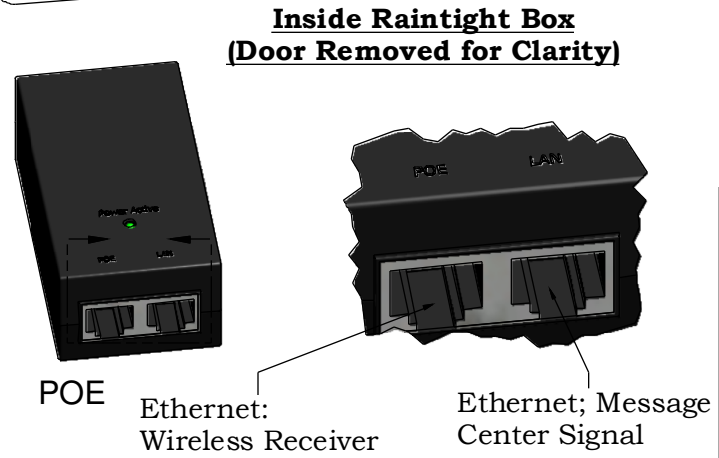
Important. Read before installation.
Power entrances are located on access panels with 2x4 box. The location of this panel may vary between different message centers. Access panels can be swapped to allow placement of incoming power/signal on the side, back or bottom of the message center typically. This sign is intended to be installed in accordance with the requirements of Article 600 of the National Electrical Code and/or other applicable local codes. This includes proper grounding and bonding of the sign. All personnel who work with electrical connections must be educated in the safe procedures for installing and repairing electrical connections before they are given the responsibility of performing such tasks. Conduit and fittings are supplied by installer.

<p>Message Center Wireless Installation</p>		<p>Neveco, Inc. Greenville, Illinois 62246</p>
<p>Drawn JW</p>	<p>Date 7/9/2013</p>	<p>Sheet 1 of 6</p>




Power Over Ethernet Supply (POE)

- Mounting POE:**
1. Cut supplied adhesive-backed fastening material into (2) 2" pieces.
 2. Peel backing off of one piece and place on back of raintight box in desired location.
 3. Place second piece on back of POE.
 4. Press POE firmly onto back of raintight box.



- Notes.**
1. Use raintight fittings.
 2. Indoor installations do not require a rain-tight box. Make connections same as above.

Message Center Wireless Installation		 Nevco, Inc. Greenville, Illinois 62246
Drawing No. 275-0732		Sheet 2 of 6
Drawn JW	Date 7/9/2013	

Temperature Sensor Photo Cell

- 1) Place in a discrete location.
- 2) Do not completely enclose the sensor box.
- 3) Placing the sensors in direct sunlight can elevate the temperature readings.

Note: It is not necessary to remove display panels to make any connections.

Connect cable from sensor to Temp. Sensor Photo Cell cable located behind Power/Signal-In access panel. Install through supplied bushing.

* Connections can be made using 1/2 conduit.

Power to 2x4 box.

*** Power/Signal-In Access Panel**

Remove knockout on panel here to make connection.

Signal-In

- cross over ethernet from POE
- remove knockout label 'Signal In' on panel to make connection

Remove other access panel to make connections and replace when finished. Wires for connections located inside cabinet.

Message Center
Wireless Installation



Neveco, Inc.
Greenville, Illinois 62246

Drawing No. 275-0732

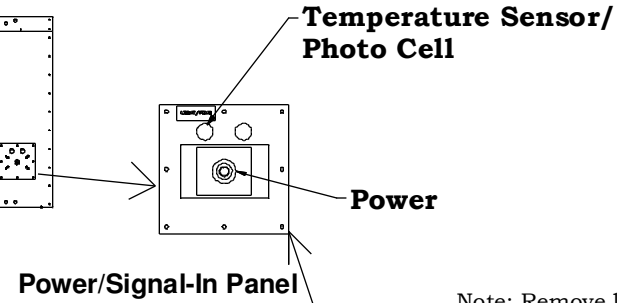
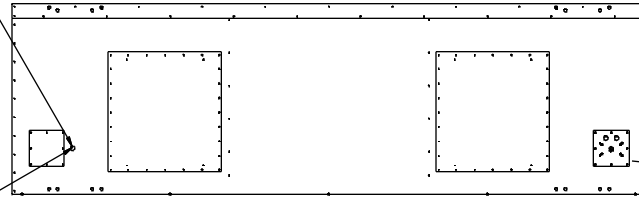
Drawn JW

Date 7/9/2013

Sheet 3 of 6

Single Cabinet Message Center

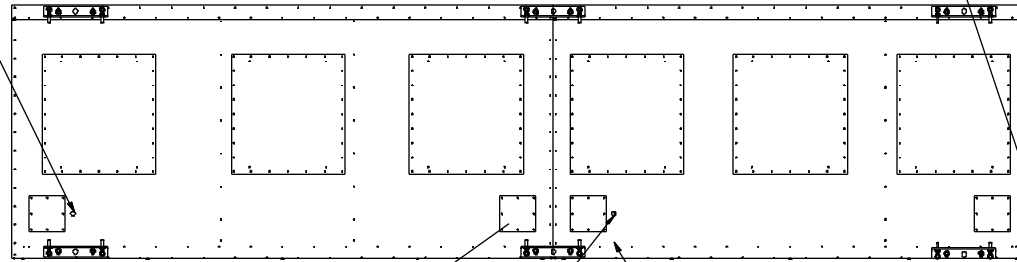
For double sided message centers, connect cable here and run straight through to Signal-In of second message center.



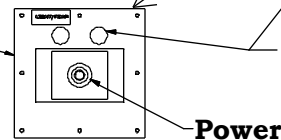
Signal Out
(remove plug or knockout to make connection)

Note: Remove knockouts in access panels where necessary to make connections.

Multi-Section Message Center



Remove panel and re-mount according to label with 2x4 box on outside of cabinet.

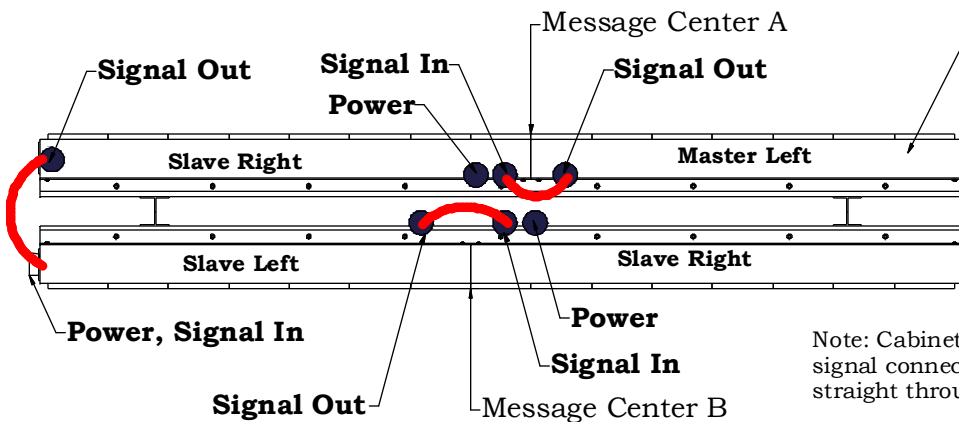


Connect ethernet from Signal-Out of first cabinet straight through to Signal-In of second cabinet.

Power/Signal-In Panel

Important. Read before installation.
Power entrances are located on access panels with 2x4 box. The location of this panel may vary between different message centers. Access panels can be swapped to allow placement of incoming power/signal on the side, back or bottom of the message center typically. This sign is intended to be installed in accordance with the requirements of Article 600 of the National Electrical Code and/or other applicable local codes. This includes proper grounding and bonding of the sign. All personnel who work with electrical connections must be educated in the safe procedures for installing and repairing electrical connections before they are given the responsibility of performing such tasks. Conduit and fittings are supplied by installer.

Multi-Section, Double Sided Message Center



Cabinet 1 is identified by Nevco logo next to Power/Signal-In panel.

Power, Signal-In
(ethernet connection from media converter)

Note: Cabinet to cabinet signal connections are straight through ethernet.

Message Center
Wireless Installation



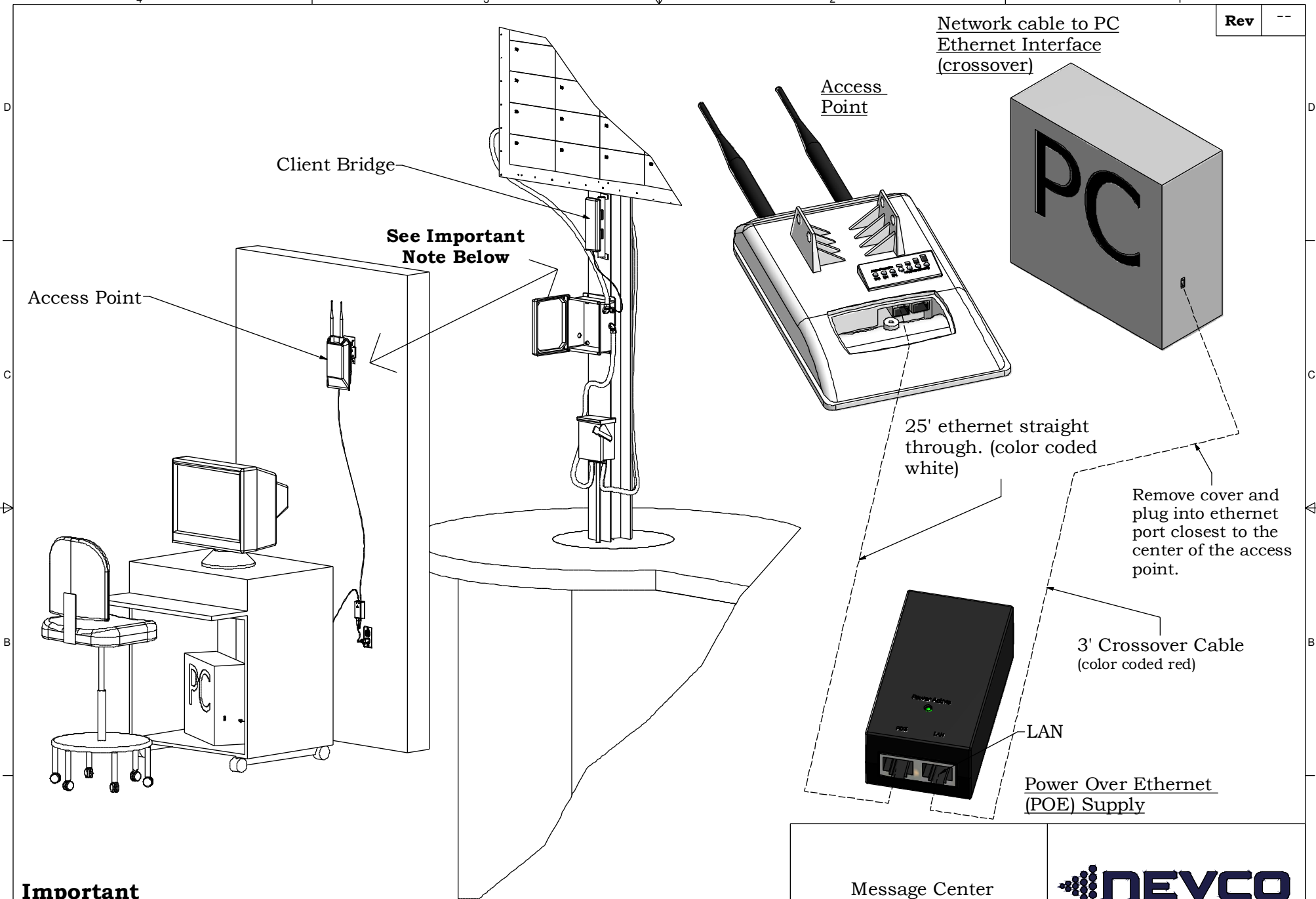
Nevco, Inc.
Greenville, Illinois 62246

Drawing No. 275-0732

Drawn JW

Date 7/9/2013

Sheet 4 of 6



Important

Wireless devices should be in Clear Line of Sight from each other. Penetration of obstacles by the wireless signal is dependant on the material of the obstacle as well as the overall distance between devices. Both units are suitable for outdoor installation. If building walls become a problem, mount the access point outside the building.

Message Center
Wireless Installation



Neveco, Inc.
Greenville, Illinois 62246

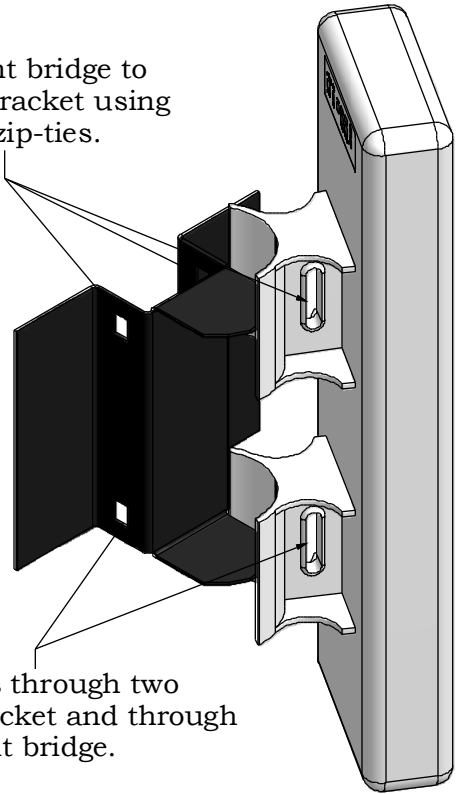
Drawing No. 275-0732

Drawn JW

Date 7/9/2013

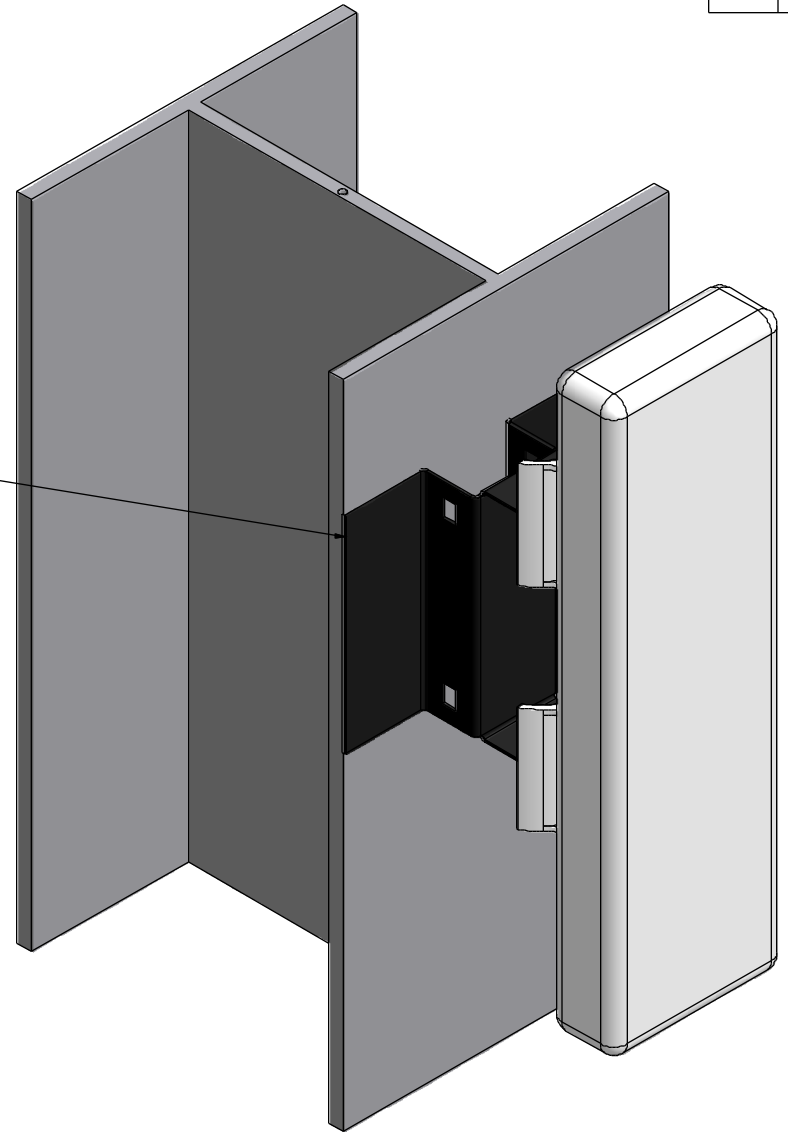
Sheet 5 of 6

Fasten client bridge to mounting bracket using 2 supplied zip-ties.

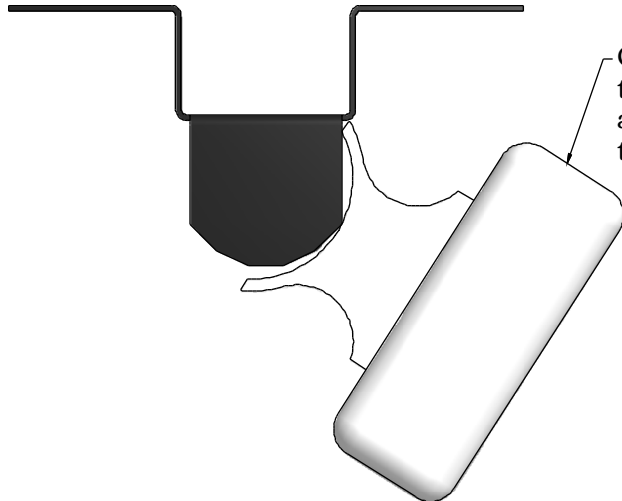


Run zip-ties through two holes in bracket and through slot on client bridge.

Bolt or clamp bracket to column or other structure. (hardware supplied by others)



Client bridge can be mounted to bracket at various angles to achieve optimum line of sight to access point in control room.



Message Center
Wireless Installation



Neveco, Inc.
Greenville, Illinois 62246

Drawing No. 275-0732

Drawn JW

Date 7/9/2013

Sheet 6 of 6